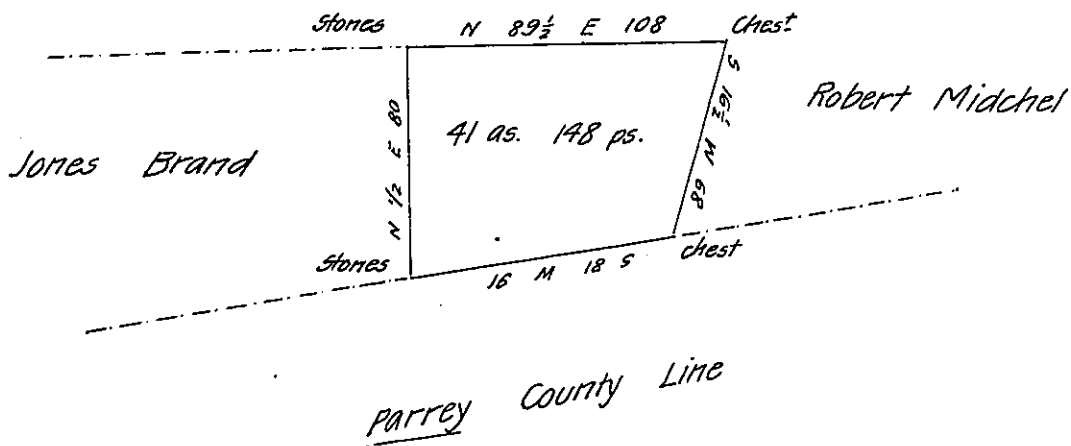


Samuel Thomson



Draught of forty one acres and one hundred and forty eight perches of
 land with six pr. Cent for roads &c. Situate in Delaware Township Juniata County sur-
 veyed February the 13th 1851 in pursuance of a Warrant granted to John Kleffman
 dated February the 4th A.D. 1851

To Conrad Markle C.S.

John Laporte Esq.

Surveyor General of Penn.

The above Land is unimproved

C.M.

IN TESTIMONY that the above is a copy of the original remaining on file in
 the Department of Internal Affairs of Pennsylvania, made
 conformably to an Act of Assembly approved the 16th day of
 February, 1833, I have hereunto set my Hand and caused
 the Seal of said Department to be affixed at Harrisburg,
 this seventh day of February 1908

Henry Howell
 Secretary of Internal Affairs.